



DILTON MARSH CE PRIMARY SCHOOL

Newsletter 3 Term 3 - Friday 20th January 2023

Dear parents and carers

On Wednesday our Year 6 Sports Ambassadors, Chloe, Poppy, Brinley and Alex attended a follow up Conference in Trowbridge. They reviewed their action plans and explored further ideas for games and techniques to develop activity levels with the younger children at lunchtimes.

Many of you will have heard reports in the press concerning the possibility of strikes by teachers over the coming weeks. I am hopeful that a resolution will be found before that date so that strikes do not happen; however, if they do, I want to reassure you that we will be doing all we can to minimise the impact on the children who attend our school.

Once we have more information, we will contact you again with any details so you are fully aware of any implications in advance of 1st February.

Attendance and Punctuality

Thank you for continuing to report any absence to the school office via our attendance phone line, or to staff on the gate in the mornings. Please do not send absence messages via elder siblings or other parents as these can be forgotten and not get to the school office as intended.

Despite a rather unsettling time with bugs and viruses before Christmas, our focus and expectation for a 'Good' level of attendance for all pupils and the whole school remains at 97%. We will continue to monitor any attendance levels below this and will keep you informed of any concerns at Parent's evenings or via a letter and may invite you for a meeting to discuss low attendance levels and how we can support further to improve these.

We encourage Dentist and Doctor's appointments to be made outside of school hours although we appreciate this is not always possible in the current climate. If possible evidence of appointments during school hours should be provided in the form of a letter or photo capture of an SMS message. Thank you for your support with this.

Alongside attendance levels, we will also be monitoring punctuality. We are noticing that many children are repeatedly arriving late for school in the mornings. Occasional mishaps are inevitable, however regular lateness would suggest a change in morning routines may be needed to ensure prompt arrival at school. The school gates are open at 8:30am and children are expected to be in school for the start of the school day at 8:45am before the gates are closed. Children who frequently arrive late are missing key learning at the beginning of the day and their late arrival can also be disruptive to the rest of their class. Please support us with these important routines and let us know if we can help in any way.

Communication and contact with us

We pride ourselves on strong relationships and communication links with our parents. As a reminder, any general queries or issues relating to your child can be emailed to your child's class teacher via the class email accounts (although please note that these emails will only be monitored around the school day). Any more urgent messages should be phoned or emailed via the school office on admin@diltonmarsh.wilts.sch.uk who can pass on and arrange a return phone call or a meeting as required. Unless it is a very brief message or a pre-arranged meeting, we ask please that parents do not seek to speak with staff before school in the mornings - they are there to meet and greet the children and then to begin teaching and learning very promptly. Thank you for your support with this.

A message from Mrs Down, SENCo

If your child has an SEN passport, your child's class teacher will have shared your child's new targets. Please get in touch if you have not seen your child's targets for this term.

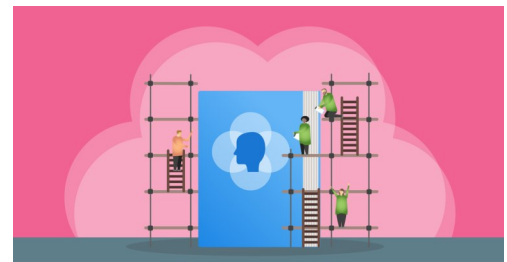
How will we continue to support learners with additional needs?

Wave of intervention	Type of support	How is it tracked?	Examples
Wave 1	High quality teaching – including reasonable adjustments for SEND.	Usual school procedures.	Seating plan, visual timetables, slopes, wobble cushions, check lists, fiddles, pre-teach, printing
Wave 2	Targeted support – block of intervention to boost progress.	School intervention tracker. SEN Passport if ongoing need for repeated intervention.	Time-limited blocks of intervention – reading, spelling, maths, fine motor, SLCN...
Wave 3	Targeted plus – ongoing intervention needed.	SEN Passport where progress is shown. My Support Plan leading to request for EHCP if less progress shown.	As above plus intervention delivered by a specialist TA, e.g. SLCN or Thrive... Referrals to other agencies.
Wave 4	Trust level provision. External alternative provision.	SEN Passport where progress is shown. My Support Plan leading to request for EHCP if less progress.	Acorn Forest School. Link 2. Acorn Behaviour Support. Acorn Educational Psychology. Aspire and The House.

Through Wave 1 intervention, we support all children through high quality teaching. We do this by something called scaffolding. This supports children's learning by encouraging them to think through tasks for themselves. It aims to give the lowest amount of support necessary for the child to achieve and to feel successful.

What is scaffolding?

- ◆ Supports learners with what they cannot yet do independently.
- ◆ New concepts and skills are more easily acquired with supports such as: physical aids, visual supports or additional adult help.
- ◆ As the learner learns the concept or skill, the scaffold is reduced.
- ◆ Support is temporary.



How parents/carers can help?

- Whatever stage your child is at, it is important to wait to be needed before stepping in with 'help'.
- Ask them to think about something relevant: "Why do you think....?"
- Ask them to think through alternatives: "That would be one way, what's another way we could try?"
- Help children who are stuck by breaking the task into smaller steps.
- It's a good idea to ensure the first step involves something the children can already do. This way they will experience success early which helps their confidence. Children who work with adults who hover and overly support every step of their learning, often have lower self-esteem as they can view the hovering as a signal that they are not trusted, or are not believed to be able, to do things on their own. Parents can also incorporate this approach in supporting their children to become independent in performing self-help tasks such as dressing themselves, brushing their teeth or feeding themselves.

If you have any questions, please do not hesitate to contact the school office to book an appointment with me every other Thursday morning. Any concerns or queries about your child's progress should be addressed to your class teacher in the first instance. I will be available to advise and support on specific SEN concerns.

Let's celebrate!

Headteacher's Awards

* Nancie (Lime Class) for great labels to describe the story of The Queen's Hat.



Star of the Week

Lime Class	Leila for her hard work and effort in all of her learning this week.
Cherry Class	Bodhi for always being kind to others.
Ash Class	Roman for thinking carefully to solve problems.
Willow Class	Maia for persevering with all her learning.
Chestnut Class	Kai for showing compassion to others.
Beech Class	Abigail for being a ray of sunshine in all areas of her learning.
Oak Class	Brinley for such improvement in arithmetic.



Dilton's Maths Magicians:

Lime Class	Brooklyn for her hard work in Maths, counting and recognising numbers to 10 and beyond.
Cherry Class	Alfie for super adding.
Ash Class	Topsy for working hard to use her times tables.
Willow Class	Elijah for super multiplication work this week.
Chestnut Class	Amelia for working hard to solve multistep problems.
Beech Class	Soren for brilliant explanations when dividing 4-digit numbers.
Oak Class	Ruby for making a SATs revision book at home.

Congratulations to Alice S who is the first child in Willow Class to earn 300 house points and be awarded her platinum badge.

House Points

Week Ending 20/1/23:

Hawk	Kestrel	Falcon	Merlin
3rd	2nd	1st	4th

Termly running total:

Hawk	Kestrel	Falcon	Merlin
32	27	26	22

Congratulations to Freddie in Chestnut Class for passing his Stage 7 swimming.

Monday 30th / Tuesday 31st January 2023	Year 6 Bikeability
Thursday 9th February 2023	West Wilts Dance Festival at Bath Forum
Friday 10th February 2023	End of Term 3
Monday 20th February 2023	Start of Term 4
Week beginning 20th February 2023	Parents' Evening
Wednesday 8th March 2023	Year 5/6 Parliament Trip to London—details to follow
Friday 31st March 2023	End of Term 4
Monday 17th April 2023	Start of Term 5